



Kingsclere Village Club
Charity Registration Number 233266a

INFORMATION FOR FIRE SERVICE

Committee/Keyholder Contacts	1
Ground Floor Layout, Utilities and Hazards	2
First Floor Layout, Utilities and Hazards	3

1. Committee/Keyholder Contacts

- Booking Secretary: Emma Hartley 01635 297913 or 07849 653809
bookings@kingsclerervillageclub.co.uk
- Chairman: Sharon Morris 01635 298370 or 07576249814
chairman@kingsclerevillageclub.co.uk
- Treasurer: Louise Porton 01635 299371 or 07881 912380
treasurer@kingsclerevillageclub.co.uk
- Committee Member Fiona Sawyer 01635 297221







2. Ground Floor Layout, Utilites and Hazards

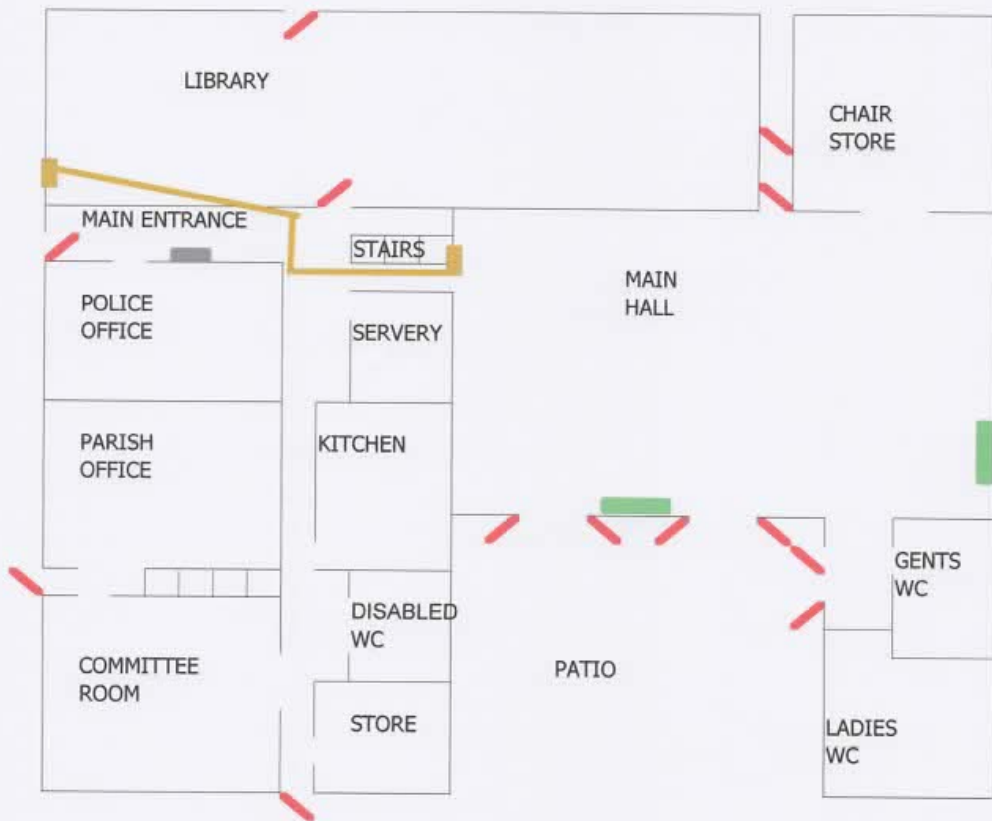
KINGSCLERE VILLAGE CLUB

INFORMATION FOR FIRE SERVICE

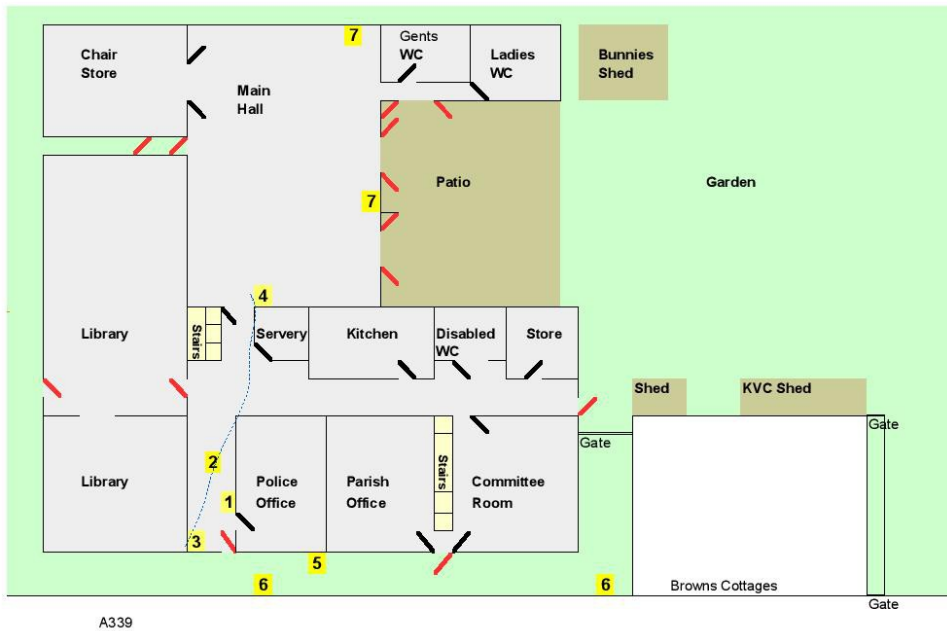
UTILITIES AND CHEMICALS

GROUND FLOOR

- | | |
|---|---|
|  Fire Alarm Panel |  Gas Heaters |
|  Electricity Fuse Box |  Gas Switch Off |
|  Main Electricity Cable on Ceiling |  Water Stop Cock |



Ground Floor



- | | |
|---|--|
| H Water Hydrant | 1 Fire Panel |
| Light Green Garden/External Pathways | 2 Mains Electricity Cable – Ceiling Mounted Plastic clips |
| Brown Garden Building or Patio | 3 Main Electrical Fuse Boxes |
| Yellow Stairs to Upper Level | 4 Fuse Box for Main Hall and Toilet Block |
| Black Internal Door | 5 Gas Main switch off |
| Red Fire Exit | 6 Water Main |
| | 7 Gas Wall Heater |

3. First Floor Layout, Utilites and Hazards

